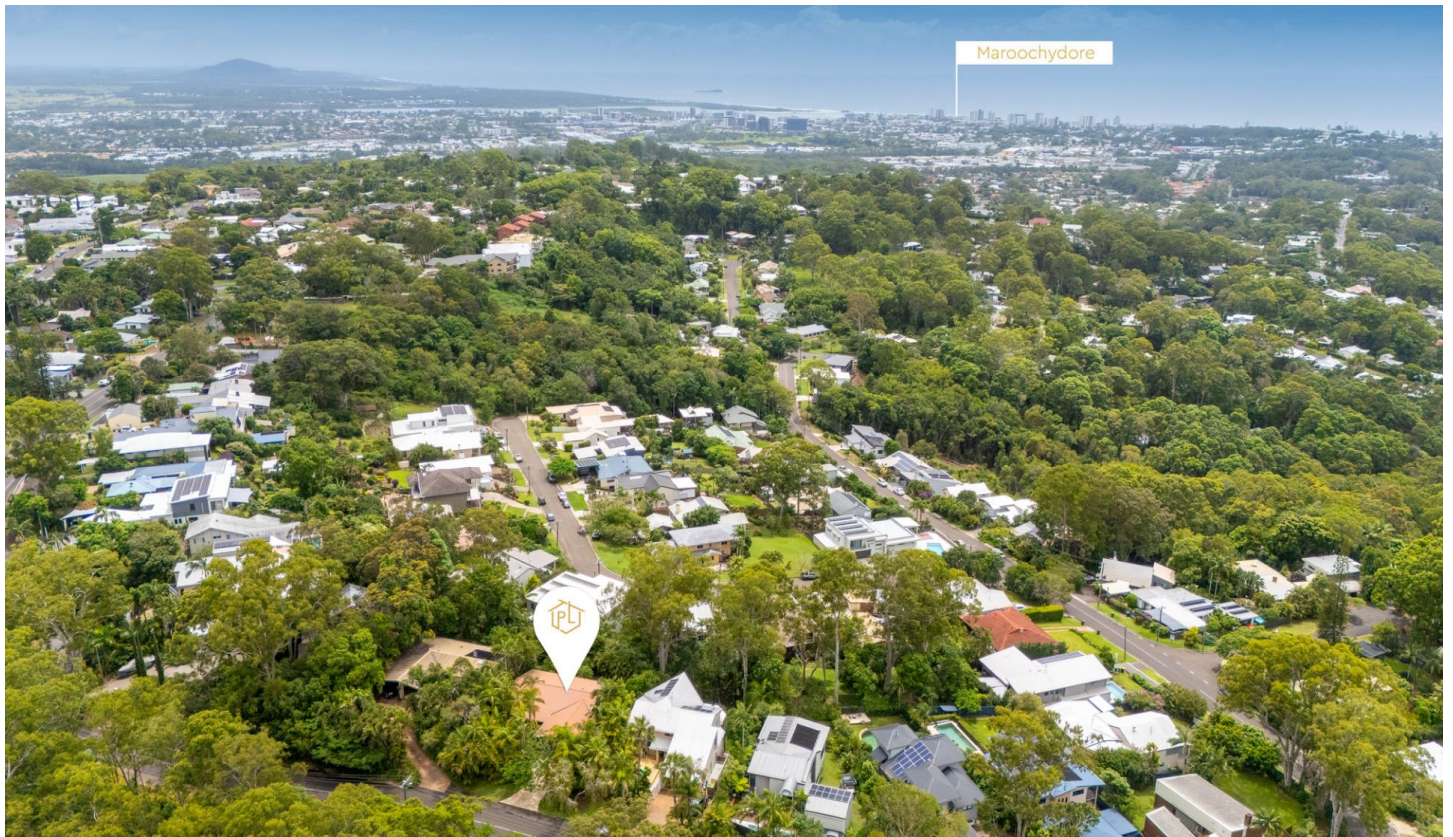




PROPERTYLANE  
REALTY



#### 74 Nyes Crescent Buderim QLD

4 2 2

Set high on the Eastern facing side of Buderim with beautiful views to the coast, this fantastic family home has been cherished for decades with so many family memories and the time has come for new happy owners to give it a new lease on life and truly capitalise on the prime location and views it offers.

The property is set on a comfortable 825m<sup>2</sup> parcel of land with a lovely levelled back yard, perfect to kick the footy around, scope for a pool, or simply enjoying the beautiful tropical gardens with glimpses of the coast.

The home has been well thought out and designed with a conveniently situated study/office next to the front door, spacious open planned design for the top floor entailing a large kitchen, living area and formal dining space along with the large main bedroom adjoining the huge outdoor

**Price** : \$ 1,115,000  
**Building Size** : 166 sqm  
**Land Size** : 825 sqm  
**View** : <https://www.propertylane.com.au/sale/ql/sunshine-coast/buderim/residential/home/7919497>



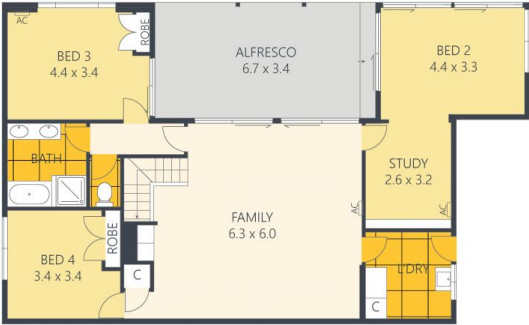
**Nadina Villani**  
07 5442 1855



**William Emms**  
07 5442 1855

<https://www.propertylane.com.au>

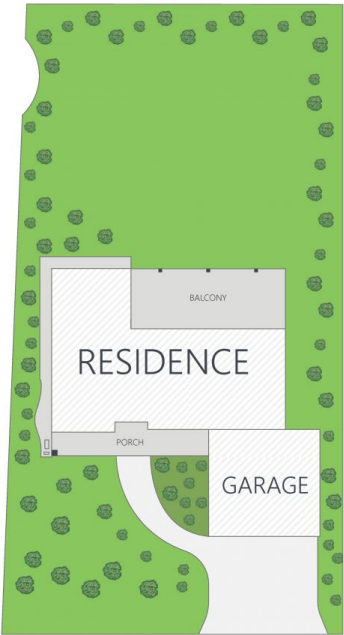
5  2  2 



LOWER GROUND FLOOR



GROUND FLOOR



ARTIST'S IMPRESSION ONLY: While every attempt has been made to ensure the accuracy of this floor plan areas and measurements of doors, windows, rooms and all other items are approximate and no responsibility is taken for any error, omission, or mis-statement. This plan is for illustrative purposes only and should only be used as such by any prospective purchaser. By RealEstateFloorPlans.com.au

Internal: 219m<sup>2</sup>  
External: 57m<sup>2</sup>  
Garage: 42m<sup>2</sup>  
Total: 318m<sup>2</sup>  
Land Size: 824m<sup>2</sup>

